

Powered Accessories



Traffic Controller

Used to control product flow from two conveyor lines into a converging point. It prevents both lines from feeding into the converging point at the same time. When an item contacts one arm it immediately locks out the opposite arm. When the product is clear, the arm returns to its normal position.

Arm Length	Conveyor O.A.W.	Model No.
12"	12"	12-TC
15"	15"	15-TC
18"	18"	18-TC
22"	22"	22-TC
24"	24"	24-TC
28"	28"	28-TC
30"	30"	30-TC
36"	36"	36-TC
42"	42"	42-TC



STANDARD SPECIFICATIONS

Capacity - 75 lbs. impact capacity at 60 FPM; 250 lbs. accumulated capacity.

Minimum Weight - 10 lbs. minimum package weight required to operate arms.

Application - Available for 30°, 45°, 90° or 180° operation - specify.

High Speed Push-Off

Used for 90° transfers when package specifications allow product to be pushed from side. Can also be used to divert packages from one lane to another in parallel conveyor lanes.

STANDARD SPECIFICATIONS

Capacity - 75 lbs. maximum package weight.

Pusher Face - 24" long.

Pusher Stroke - 20" to 30"

Cycles - Up to 40 times per minute, up to 24" stroke only, @ 80 PSI

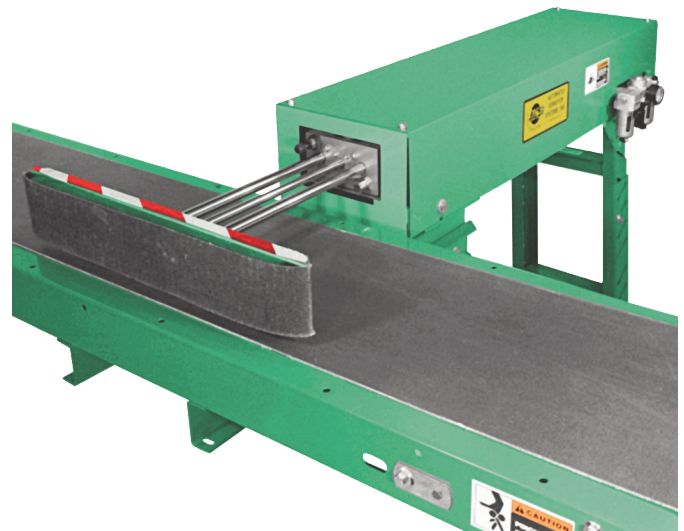
Air Cylinder - 2" bore double acting, automatic return, with jam protection

Air Requirements - Minimum pressure 60 PSI; maximum 125 PSI. Free air consumption @ 60 PSI - .235 cu. ft. per cycle for 20" stroke, .355 cu. ft. for 30" stroke.

Valve - Single solenoid 4 way, automatic return valve, 1/2" - NPT valve ports; filter-regulator included.

Electrical requirements - 120V, single phase, 60 Hertz. Current draw, .07 amps.

Electrical Controls - PLC included



Guard Rails

SOLID STEEL GUARDS

Mounts to side of conveyor bed sections. Guard heights above belt: 2.5", 3.5", 4.5", 6.125", 9.125", 10", and 12.5", 12 gauge galvanized or powder painted steel.

ANGLE GUARDS

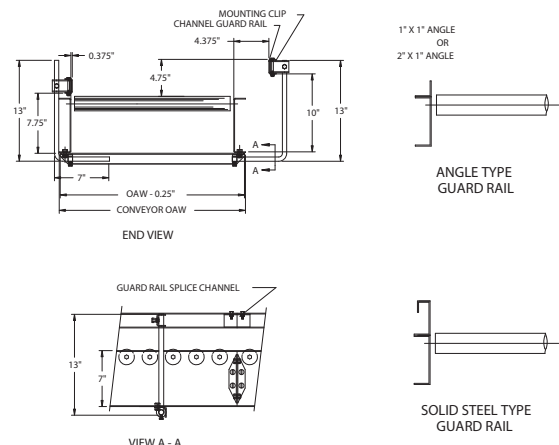
Sizes - 1"x 1" or 2"x 1". Mounts easily to top flange of conveyor frame.

Applications - Available for gravity or powered conveyors with 1" or 1 1/2" wide channel flanges.

Angle guards - 12 gauge galvanized steel.

ADJUSTABLE CHANNEL

Aluminum or steel. Use with powered and gravity conveyors. 5/8" steel rods provide vertical and horizontal adjustment. Available for straight conveyors, curves and spurs. Continuous (system type) or standard flared ends available. (Specify)



ADJUSTABLE CHANNEL GUARD RAIL