

MODELS "138CLRS" and "138CLRSS" V-Belt Spur



NOTE:
 Model shown
 is 190CLRSS.

- Used for merging or diverging
- Gives positive drive
- Can be slave driven by "138CAP"

STANDARD SPECIFICATIONS

Driving Belt - "B" section V-belt.

Bed - Roller bed width between frames, 10", 13", 16" and 22". 5 1/2" x 1 1/2" x 12 gauge powder painted formed steel channel frame.

Tread Rollers - 1 3/8" diameter x 18 gauge galvanized steel tread rollers, 1 1/2" centers, 5/16" hex shaft for 13" to 19" OAW. 2 1/2" to 1 1/16" tapered roller for 25" OAW conveyor, 7/16" hex shaft.

Pressure Sheaves - 3" diameter x 3/8" bore, adjustable to give required driving force.

Floor Supports - One support adjustable 30" to 44" from floor to top of rollers.

Tangent - 12" long, on one end of curved spur.

Take-Up - Screw take-up provided to insure proper V-belt tension. Mounted in conveyor frame.

End Drive - Mounted below bed section.

Bearings - Sealed prelubricated with cast iron housings.

Speed Reducer - C-Face mounted heavy duty worm gear reducer.

Motor - 1/2 HP 230/460-3-60 TE motor.

Conveying Speed - 60 FPM constant.

Capacity - 300 lbs. total distributed live load.

OPTIONAL EQUIPMENT

Guard Rails - Adjustable channel, continuous channel, steel guard rails available.

Floor Supports - Lower or higher supports are available. Minimum elevation 15 1/2".

Ceiling Hangers - 1/2" diameter threaded rods 8 feet long with locking nuts and mounting hardware. Other lengths are available.

Side Mounted Drive - End drive mounted to side of conveyor bed section. Minimum elevation 8". Specify side.

Motor - Single phase, energy efficient, explosion proof, etc. Other HP available.

Conveying Speed - Variable and other constant speeds available.

Electrical Controls - Magnetic starters and push button stations; manual motor starters with overload protection, others.

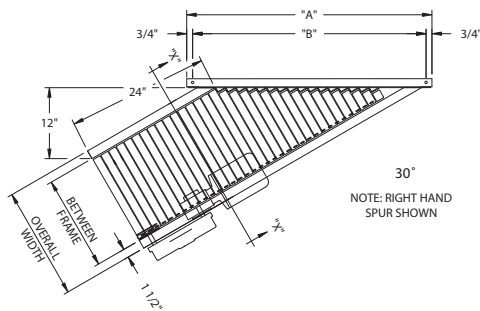
MODELS "138CLRS" and "138CLRSS"



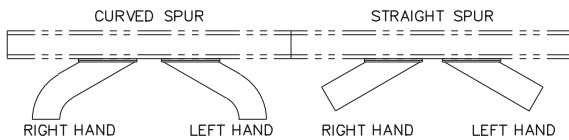
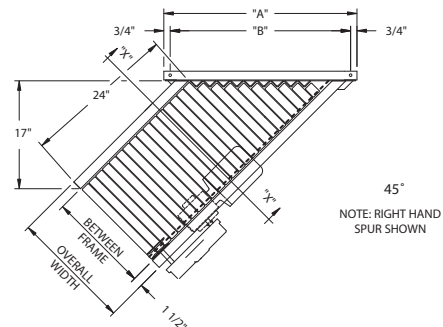
CURVE SPUR "138CLRS"								
Overall Width	Width Between Frame	Radius	A		B		Weight (lbs.)	
			45°	30°	45°	30°	45°	30°
13"	10"		45 1/4"	48 3/8"	34 3/8"	49 3/8"	130	140
16"	13"	25"	47 1/4"	51"	39 1/2"	57"	135	145
19"	16"		49 1/2"	53 1/2"	44 5/8"	64 1/2"	140	150
25"	22"	32 1/2"	59"	65 1/4"	57"	83"	145	155

STRAIGHT SPUR "138CLRSS"							
Overall Width	Width Between Frame	A		B		Weight (lbs.)	
		45°	30°	45°	30°	45°	30°
13"	10"	21 1/2"	29"	20"	27 1/2"	160	185
16"	13"	25 1/2"	35"	24"	33 1/2"	165	190
19"	16"	30"	41"	28 1/2"	39 1/2"	170	195
25"	22"	38 1/2"	53"	37"	51 1/2"	175	200

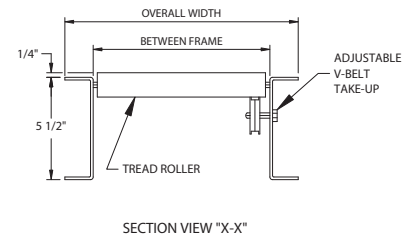
"138CLRSS" STRAIGHT SPUR - 30°



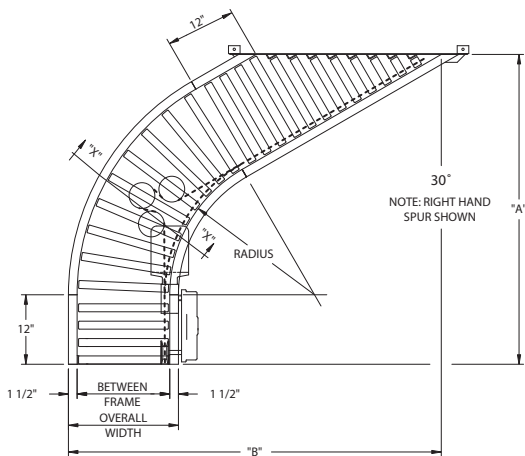
"138CLRSS" STRAIGHT SPUR - 45°



- Specify "right" or "left" hand unit.
- Specify direction of flow.
- Specify conveyor to be attached to in order for proper attachment bracket to be furnished.



"138CLRS" CURVE SPUR - 30°



"138CLRS" CURVE SPUR - 45°

